

# Be the Change

Solo: verses

$\text{♩} = 65$  Ebm

Ab

Fm

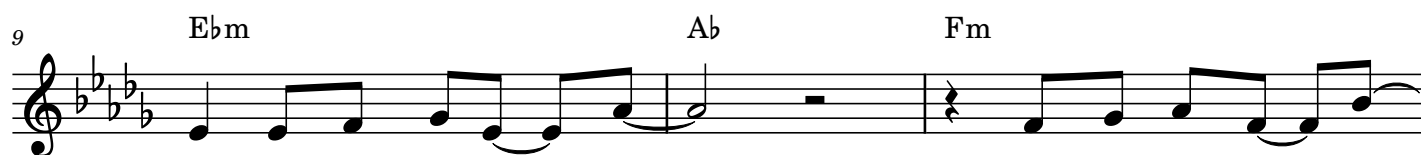
Bbm



So much noise and dis - re - spect; we find it ev - 'ry place.  
There is ha - tred more and more; it's ev - 'ry-where I see, —



Trou - bles that we don't ex - pect and peo - ple in your face. Don't you  
from the folks who live next door and Wash - ing - ton, D. C. If I



wish you could make it change? Don't you wish you knew  
rail at it all a - lone would my voice get through?



if there was some - thing you could do?  
What can one lit - tle per - son do?

Congregation



Be the change. Be the change. What - e - ver oth - ers



do, all the po - wer is in you. Take the lead. All you need



if you want to change the world, be the change.

## Arrangement Permissions

One-time Adaptation

New Arrangement OK

Seek permission to arrange

Look at the Sing Out Love "Permissions" section for further explanation

Be the Change - 2

2 Solo: Verse 3

33  $D\flat$   $C\flat$   $G\flat$   $F\flat$

You give me bad, I give it back, and 'round and 'round we

37  $F\flat$   $G\flat m$   $C\flat$   $F\flat$

go. It on - ly gets worse, that's a gua-ran - tee.

41  $F\flat$   $E\flat$   $B\flat$   $C$

But be - fore we have one more at-tack, here's what I need to

45  $C$   $F\flat m$   $F\flat 7$   $B\flat$

know: Who will break the cir - cle if not me?

Congregation

49  $A7$   $D$   $D$   $GM7$   $GM7$   $F\sharp m11$

Be the change. Be the change. What - e - ver others

55  $Bm$   $Bm/A\flat$   $Gm6$   $Am7$   $A\flat 7/D$   $GM7$

do, all the po-wer is in you. Take the lead. All you need

61  $Em7\flat 5/A$   $D$   $F\sharp 7/C\sharp$   $Bm$   $A$   $Bm$

if you want to change the world, be the change.

65  $Em7\flat 5$   $D/A$   $F\sharp 7/B\flat$   $Bm$   $A$   $D$

It's the way we'll change the world, be the change.